

**ERGO BIPOLAR**  
LAPAROSCOPIC COAGULATION  
INSTRUMENTS, 5mm & 3mm



**BOWA**  
EINFACH SICHER



ERGO bipolar –  
the standard  
for laparoscopy

## The smart standard 5mm instrument system

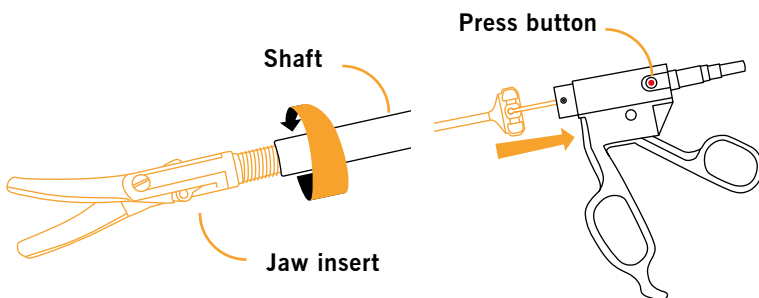


The reusable three piece construction ensures optimal reprocessing and sterilisation.

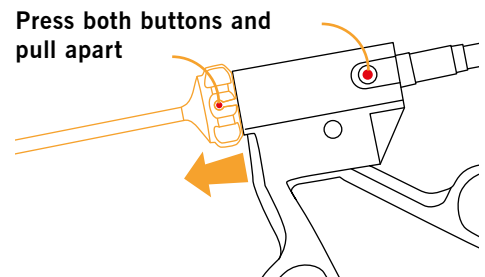
The modular structure enables easy exchange of inner parts, even in a sterile environment. A variety of working lengths and a large selection of jaw inserts make the ERGO bipolar instruments suitable for use in a diverse range of applications. The jaw mechanism features a dual articulation for high tactile feedback and an isolation coating increases the lifetime of the instrument.

ERGO bipolar instruments are available with a standard flat connector and can be used with all common electrosurgery devices. To meet the constantly rising requirements of modern hospitals for process optimisation and quality assurance, BOWA offers a Comfort version with plug & play functionality and integrated service life monitoring.

### Easy assembly



### Disassembly



### The BOWA COMFORT SYSTEM

Immediate deployment thanks to the automatic parameter preselection on your ARC generator for reliable device settings, resulting in enhanced patient safety.



### From every position

The 5mm instruments can be combined with a 360° rotatable handle, which can be locked in any desired position.



ERGO 335R –  
bipolar instruments for  
mini-laparoscopy

## Bipolar precision, with 3mm diameter instruments



Utilise familiar operating methods with extremely high assurance of patient safety thanks to bipolar technology. An outer 3mm diameter enables especially low-impact operating, taking into consideration cosmetic effects and post-operative complaints.

The integrated force limitation in the ERGO 335R ensures optimal pressure transfer to the tissue and protects the jaw insert against overload.

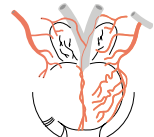
The advantages of these instruments are backed up by a specially matched trocar.



General surgery



Gynaecology



Urology



### LAP micro

A special setting for fine 3mm instruments when used with the COMFORT plug.











### The BOWA COMFORT SYSTEM

Immediate deployment thanks to the automatic parameter preselection on your ARC generator for reliable device settings, resulting in enhanced patient safety.

# Ordering information







## 5mm coagulation instruments

	Shaft		Handle options			
	WL 340mm 741-234	WL 340mm 742-234	ERGO 320R, COMFORT handle, 4.5m cable 741-100	ERGO 320R, handle 741-101	ERGO 325R, rotating handle, with lock 742-106	
Jaw insert						<b>Complete instrument</b> Consisting of: - Jaw insert - Shaft - Handle
 Atraumatic forceps, fenestrated 742-310	●		●			741-812
	●			●		741-814
		●			●	742-816
 Forceps, fenestrated, curved 742-320	●		●			741-822
	●			●		741-823
		●			●	742-826
 „Metzenbaum“ scissor 742-330	●		●			741-832
	●			●		741-833
		●			●	742-836
 „Maryland“ dissector 742-340	●		●			741-842
	●			●		741-843
		●			●	742-846
 Forceps with 2x3 teeth 742-350	●		●			741-827
	●			●		741-828
		●			●	742-829

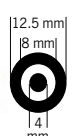




### 3mm coagulation instruments

		Shaft		Handle options		
		WL 290mm 744-229	WL 200mm 744-220	ERGO 335R, COMFORT handle, 4.5m cable 744-100	ERGO 335R, handle 744-101	
Jaw insert						<b>Complete instrument</b> Consisting of: - Jaw insert - Shaft - Handle
 Atraumatic forceps, fenestrated	744-313	●		●		744-812
		●			●	744-815
	744-312		●	●		744-813
			●		●	744-816
 „Maryland“ dissector	744-343	●		●		744-844
		●			●	744-847
	744-342		●	●		744-845
			●		●	744-848

		WL	Aperture	
	Trocar sleeve with insufflation tap, metal tube, smooth, distal bevel	100mm	3.4mm	745-100
	Trocar, triangular tip			745-200

### Connecting cable

		Generator end			
		28.58mm		22mm	
		BOWA Erbe International* Martin International Valleylab Conmed	Erbe VIO / ICC / ACC Erbe T series	Erbe VIO International*	Martin
 BOWA forceps European flat connector	351-040 (4.5m)	101-040 (4m)	353-040 (4.5m)	287-040 (4.5m)	

\* Depending on the respective socket configuration

**BOWA**  
EINFACH SICHER

BOWA-electronic GmbH & Co. KG  
Heinrich-Hertz-Strasse 4 – 10  
72810 Gomaringen | Germany

Phone +49 (0) 7072-6002-0  
Fax +49 (0) 7072-6002-33  
info@bowa.de | bowa-medical.com

